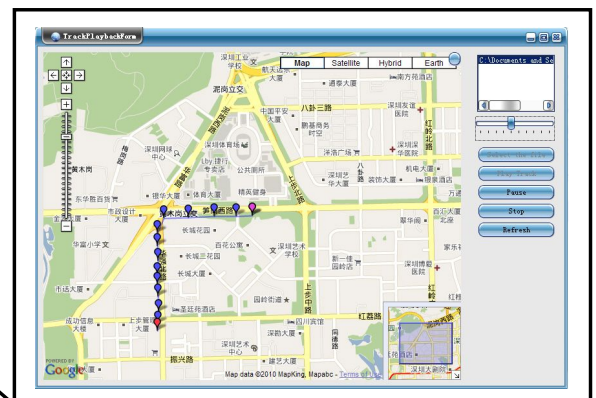
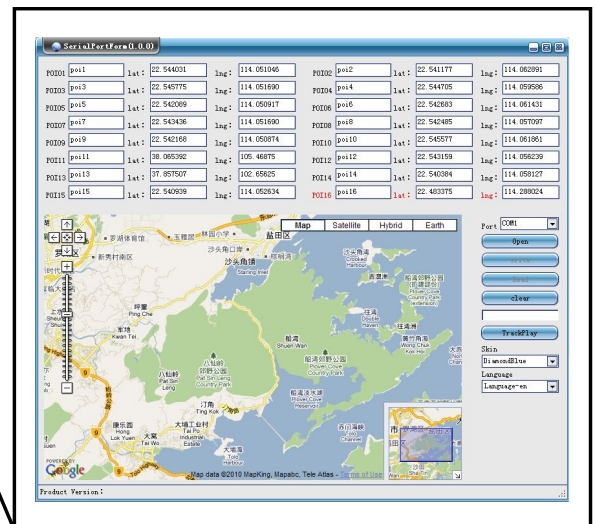


ManGo

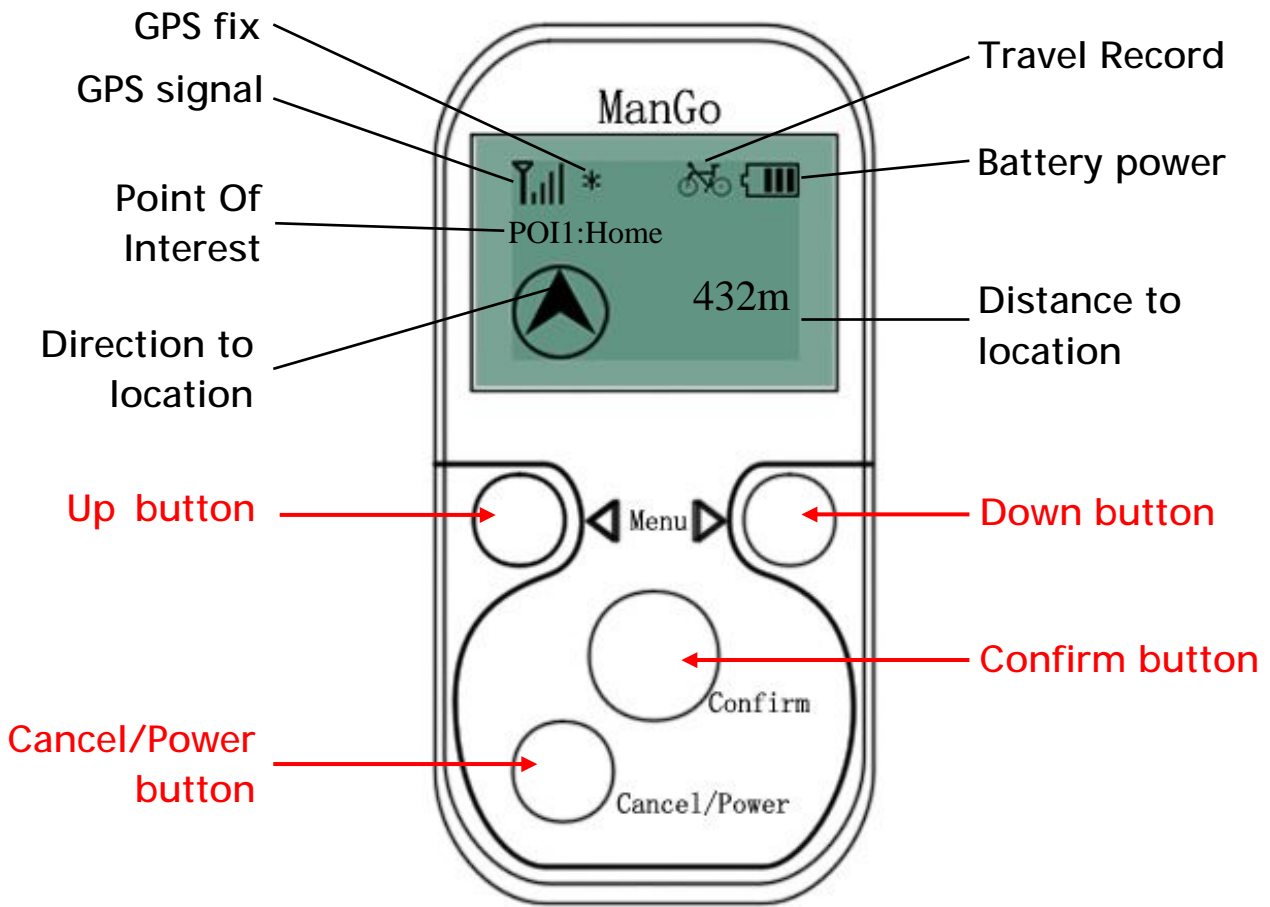
Easy to use, never get lost!

Features:

- ◆ **Dimension:** 90X45X19mm
- ◆ **Weight:** 65g
- ◆ **GPS Chipset:** SiRF-Star III
- ◆ **Store and locate up to 16 locations**
- ◆ **PC interface easy to setup POI on Google map**
- ◆ **Backlight LCD for viewing in darkness and low light**
- ◆ **Compass**
- ◆ **Mileage**
- ◆ **Real-time speed**
- ◆ **Average speed**
- ◆ **Clock**
- ◆ **Altitude**
- ◆ **TimeZone setting**
- ◆ **Real-time latitude and longitude**
- ◆ **DataLogger (Max: 2GB Micro SD card)**
- ◆ **Playback historical track**
(Maximum 14900000 points)
- ◆ **Backup battery:** Rechargeable 1000 mAh

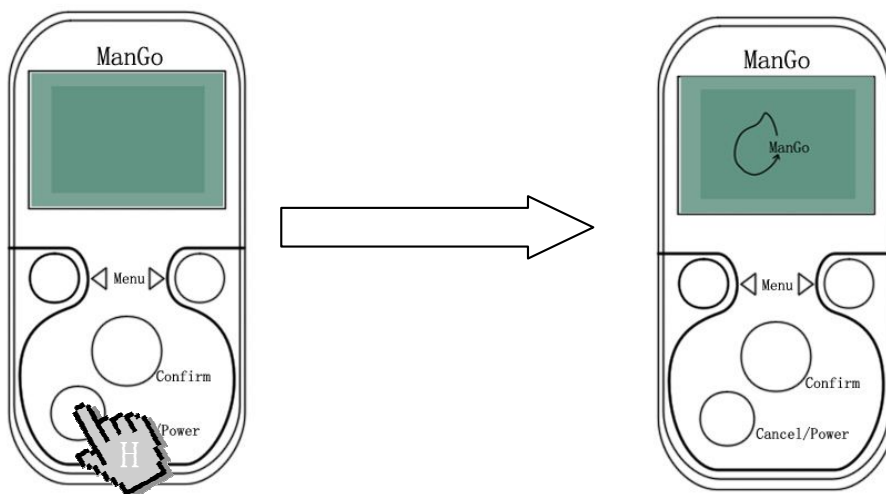


1. Preview



2. First use

Open the battery cover and insert a lithium battery(BL-5C).

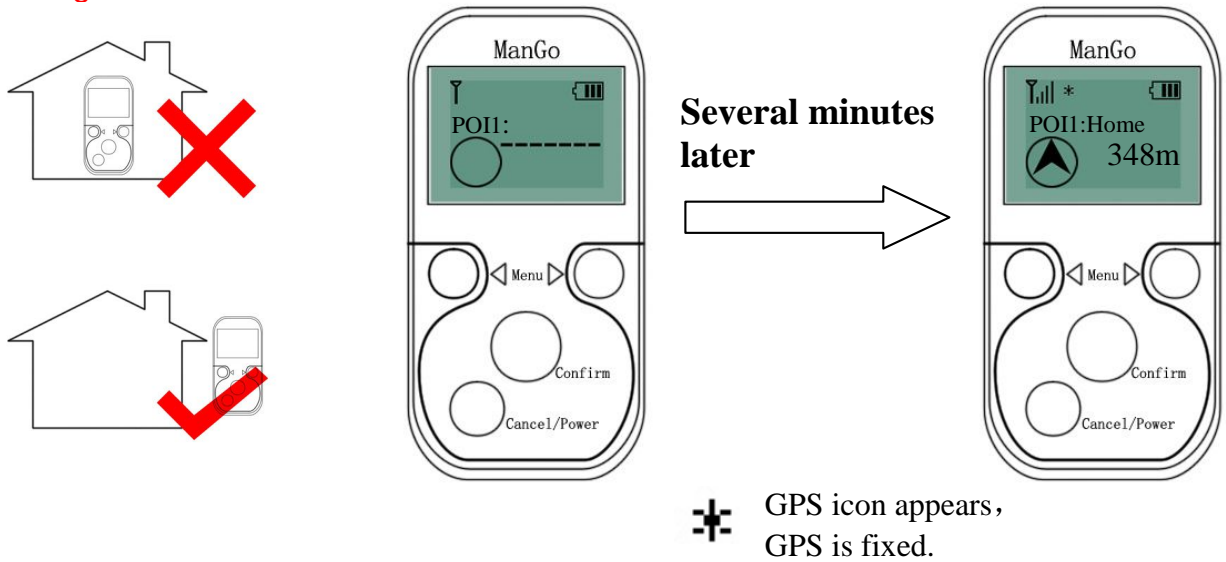


Press Cancel/Power button for **3 seconds** to turn on the ManGo. Then a welcome interface "ManGo" icon appears.

Make sure it is located in a place with an **open skywait** until the GPS icon flashes, it means GPS is fixed.

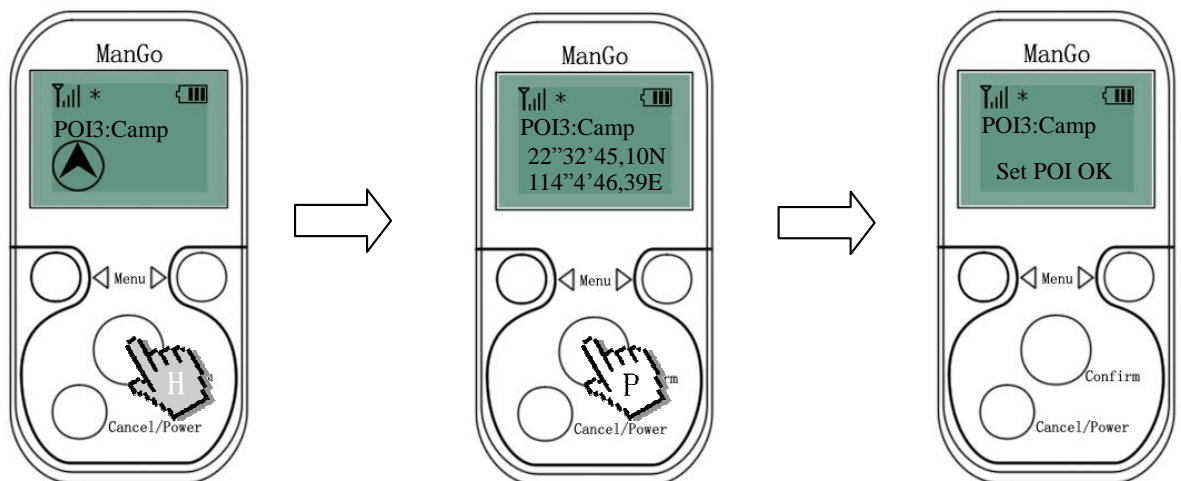
Note: Perpendicular to the ground, the ManGo will get the strongest GPS signal!

Warning!



3. POI (Point Of Interest) , Totally 16 POI you can set!

To set the POI precisely, GPS signal level must show 3 bars at least. (total 4 bars)

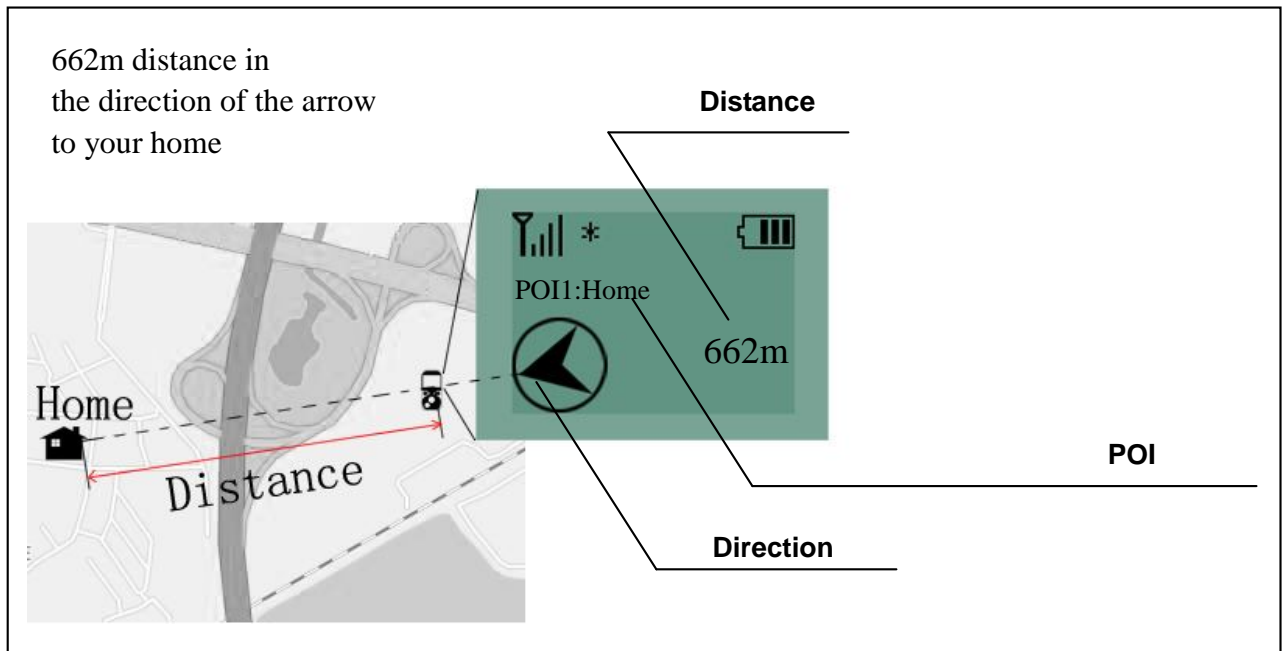


Press confirm button for **3 seconds** and then the coordinate appears

Press confirm button again to confirm it

Set successfully!

POI use figure



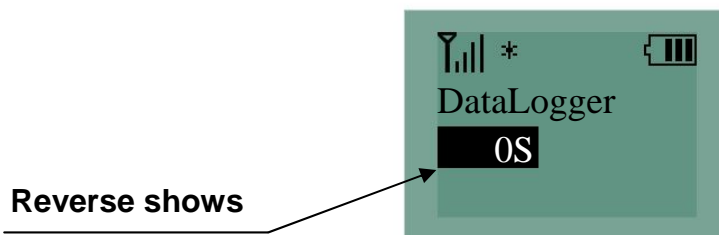
*Note: When you use POI function, please make sure the ManGo is **moving**, or you will get wrong direction information!*

4. In main menu, press **down** or **up** button to change the option, every option has its function.

➤ DataLogger

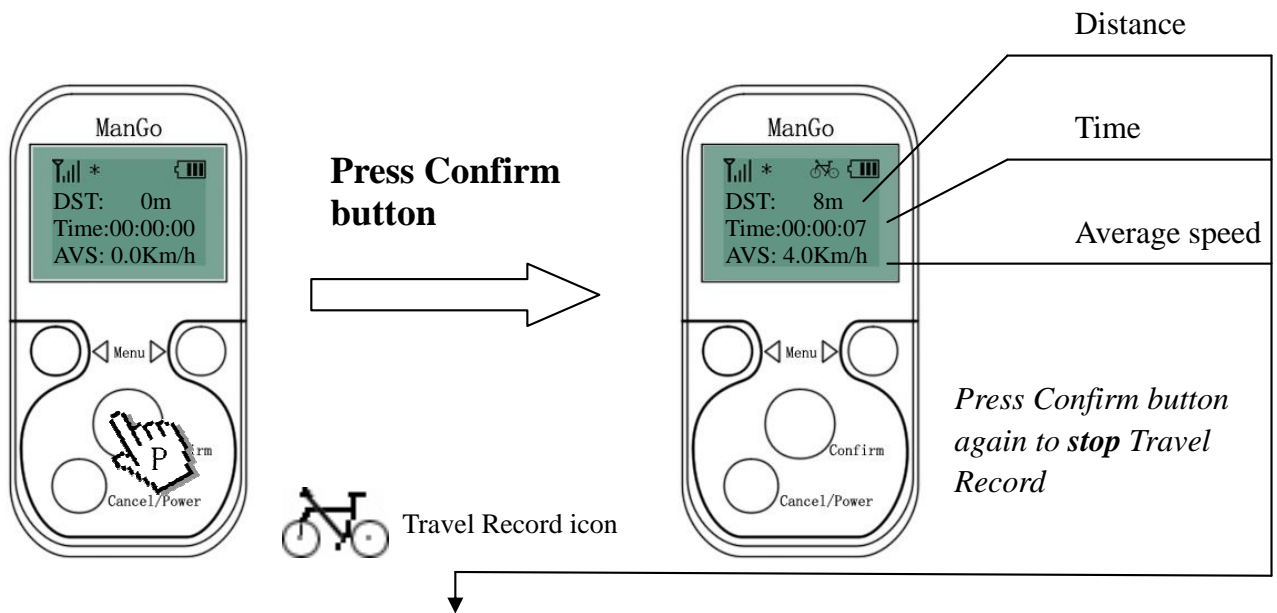
The default **interval** of DataLogger is 30 seconds, press **confirm** button and the time area become **reverse shows**, then you can change it by pressing **down** or **up**.

*(Cancel/power button is used to cancel the operation at this kind of **configure** interface, furthermore in any **main** menu you can press it to return to **POI** option.)*



*Note: Interval time equal 0 means DataLogger function is **shut**.*

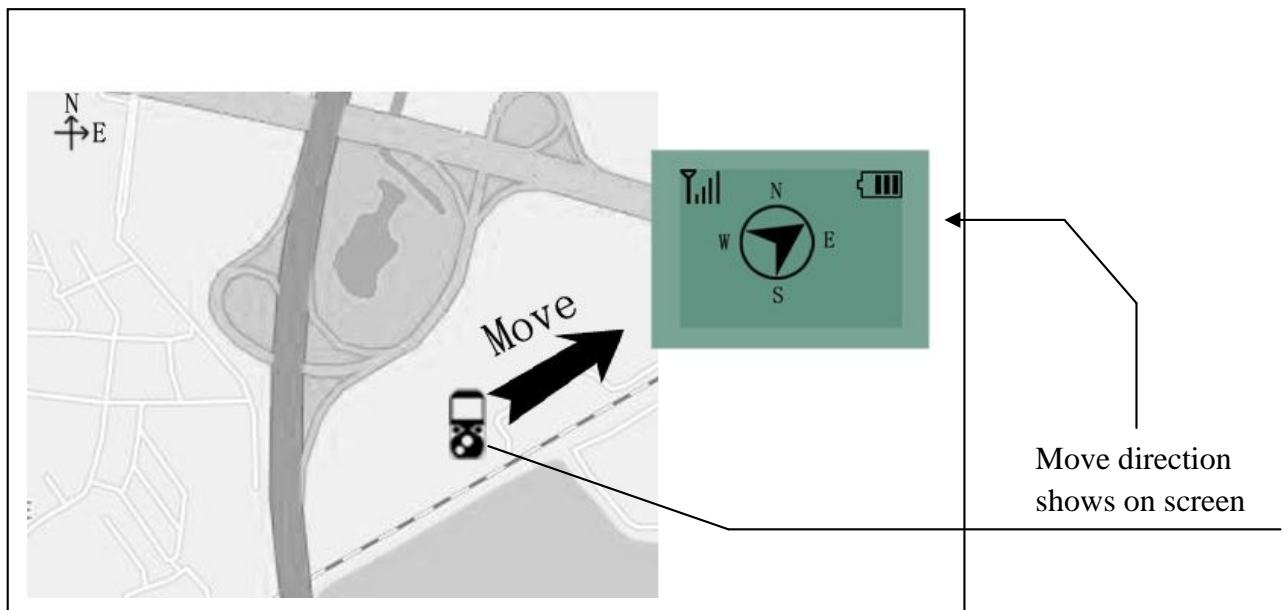
➤ Travel Record



After stopping a travel, the **travel data** will remain until a new travel starts, and when you start a new travel the **travel data** will be cleared at once.

Note: The distance units will automatically change from "m" to "Km" when you travel a great enough distance!

➤ Compass

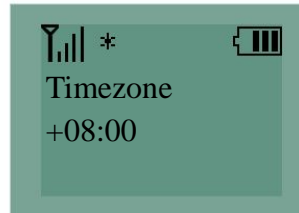


When using Compass function, please also make sure the ManGo is **moving**!

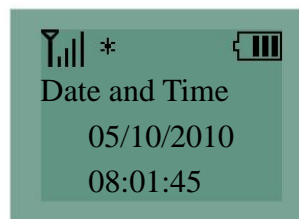
➤ Date/Time and Time zone

The ManGo gets **GMT** from satellite, So you should set a **time difference** in timezone interface.

For example: Beijing's timezone is +8, so we should set the timezone as right figure.

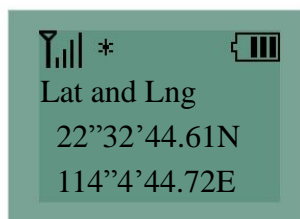


*According to the **GMT** got from satellite and the **timezone** you set, ManGo displays **correct** date and time on Date/Time interface.*



➤ Coordinate

Coordinate includes longitude and latitude so that we can know the accurate location.

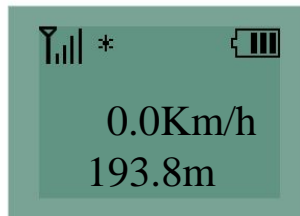


➤ Backlight

Backlight will automatically be turned off if no buttons have been pressed for a time, you can set 5s\10s\30s\60s\infinite, "infinite" means backlight is always on.

➤ Speed / altitude

The speed is a real-time speed, not average speed. Altitude also is a basic information for travelling.



➤ Mileage

In this place, mileage refer to all distance you have travelled before, you can clear it as you want.

