

## Dot Matrix Fish finder Operation Guide(TL58)

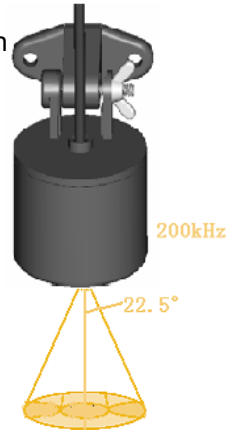
This product is designed for fishing liker. The unit can be used in the river, the lake, or the sea. It can help you find out the fish and measure the depth of the water. Especially, it can bring pleasure to you in fishing. If you go fishing, you need a helper!



. 1 .  
fig-1

## 2.Introduction to sonar theory:

Sonar technology is based on sound waves. The system uses sonar to locate and define, structure bottom contour and composition, as well as the depth under the transducer. The transducer sends a sound wave signal and determines distance by measuring transmission time between the transducer and the detected object. then uses the reflected signal to interpret location, size, and composition of an object.



. 2 .  
fig-2

## 3.Display View

- 1.Water Depth
- 2.Water Temperature
- 3.Bottom Contour
- 4.Depth Range
- 5.Fish Icon with Depth
- 6.Water Surface Line
- 7.Battery Strength Indicator
- 8.Sensitivity Indicator
- 9.Upper Depth Range

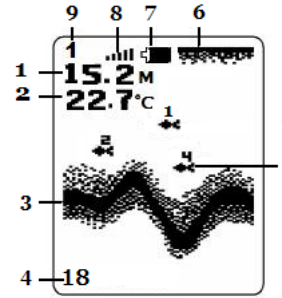


fig-3 . 3 .

## 4.Key-Press Operation And Setting POWER/MENU

Power/Menu key is a multi-function key. power on/off the unit or menu selection will uses the key

### Left Key

left key is a slecting key,only when the left arrow is displayed,the key is active.

### Right Key:

Right key is a slecting key,only when the right arrow is displayed,the key is active.

### How to power on or shut off the unit :

Slide and remove the battery door,Install 4 AAA batteries. Close the battery door completely.Press POWER/MENU key for 3 seconds to turn power On, The start-up menu will be displayed on the screen.You can through right key to enter Simulation mode or 5 seconds later to enter normal mode.Press power/Menu key for 3 seconds,the unit will be shut off.

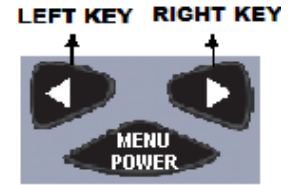


fig-4

## 5.Parameter setting

The unit has a simple menu system.Through Power/Menu key to select the parameter you want,then use left/right key to set up the parameter.When the unit at normal mode, press any key will spring a menu.After 5 seconds the menu will disappear from the screen.At normal mode,the unit will shut off automatically within 5 minutes without transducer.

### 5.1 Backlight setting

The unit has white LED backlight.You can use it at night or under weak light.To extend the battery life,please use the function only when you really need it.

**Operation:**press and release the"MENU" key,until "light" is displayed on the screen (fig-5).Through left/right key to turn on/off the backlight.



fig-5

### 5.2 Sensitivity setting

Sensitivity indicates the intensity of sonar signal.The unit has 5-degree sensitivity for user to select.Normally,if you want to get

. 5 .

more chances to detect the fish,you can choose the higher sensitivity.User can select the sensitivity as you want.When the water is shallow or exist noise(made by ship's motor etc),you should select low sensitivity.Thus the detection will be more accurate.

**Operation:**press and release the"MENU" key, until "sensitivity" is displayed on the screen(fig-6). Through left/right key to adjust the sensitivity.



fig-6

### 5.3 Depth range setting

Depth range is the biggest depth of detect range. The biggest depth detect rang is displayed at the left of the bottom.If the detected rang is out of the biggest rang,nothing will be displayed at the location of depth.

**Operation:**press and release the"MENU" key, until "Depth range" is displayed on the screen (fig-7). Through left/right key to adjust the depth range.Select "AUTO" the Unit selects the depth range automatically.At manual mode,the depth range can be adjusted.The unit has 6 (4,9,18,36, 54,73M)ranges for consumer to select.

. 6 .



fig-7

### 5.4 Zoom on/off setting

Zoom on/off function is off in default.When the unit in zoom on,it will change the upper and lower depth range constantly.Then keep the test area just above upper and below the lower range .

**Operation:** press and release the"MENU" key, until "Zoom" is displayed on the screen(fig-8). Through left/right key to adjust this function.



fig-8

### 5.5 Depth alarm setting

Depth alarm is designed for user to set a number (1-28M)of depth.When the test depth is equal or less than the setting,it will alarm!

**Operation:** press and release the"MENU" key, until "Depth alarm" is displayed on the screen (fig-9). Through left/right key to adjust the depth alarm.

. 7 .



fig-9

### 5.6 Fish alarm setting

Fish alarm is turn on/off the alarm when the unit detecting fish.When the fish alarm is on,it will alarm. If alarm is off,it won't alarm even if detecting fish. User can setting this parameter according your own needs.

**Operation:** press and release the"MENU" key, until "Fish alarm" is displayed on the screen (fig-10).Through left/right key to adjust the fish alarm.



fig-10

### 5.7 Fish Icon setting

"Fish Icon" is turn on/off fish icon when the unit detecting fish.When the "fish Icon" is on,it will display fish Icon with depth.If "fish Icon" is off,it won't display even if detecting fish.

. 8 .

Operation: press and release the "MENU" key, until "Fish Icon" is displayed on the screen (fig-11). Through left/right key to adjust fish icon on/off.



fig-11

### 5.8 Chart Speed setting

"Chart Speed" is adjust the screen scan speed. The unit have 4 grades ("4" is the fast). Operation: press and release the "MENU" key, until "Chart speed" is displayed on the screen (fig-12). Through left/right key to adjust scan speed.



fig-12

### 5.9. Depth unit setting

Depth unit setting is the switch of depth unit.

. 9 .

Operation: press and release the "MENU" key, until "Depth unit" is displayed on the screen (fig-13). Through left/right key to adjust depth unit.



fig-13

### 5.10 Temperature unit setting

Temperature unit setting is the switch of temperature unit.

Operation: press and release the "MENU" key, until "Temperature unit" is displayed on the screen (fig-14). Through left/right key to adjust temperature unit.



fig-14

### 6. Fixing Sonar Sensor

6.1 Pull out the rubber stopper, adjust float so that it is 20 to 30cm away from the sensor, or at your desired depth. Replace the rubber stopper by

. 10 .

pressing it firmly into the float. The sensor float must be adjusted so that it is a minimum of 20cm away from the sensor (fig-15)

6.2 Toss the sonar sensor and float assembly into water at your desired fishing location. To toss, place the sonar sensor and float in your hand, and pitch underhand. Do not throw the cable, as this may cause unreparable damage.

Before tossing, be sure that the cable is free from tangle and is not wrapped around anything.

6.3 Your fish finder includes

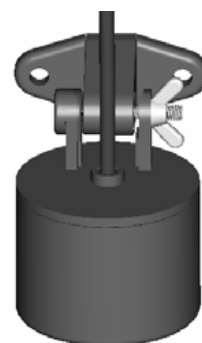


fig-16

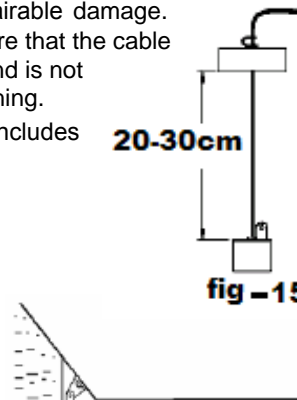


fig-15

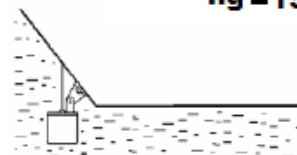


fig-17

. 11 .

a combination adapter, mounting bracket for the sonar sensor (fig-16). The adapter includes mounting tabs so that you can attach it to any flat surface or boat hull (fig-17) and appropriate rod. The adapter is removable and adjustable up to 180 degrees.

6.4 Use a pole to guide the sonar sensor to a desirable position (Fig-18) or add floats on the cable to float on the surface (Fig-19).

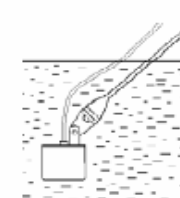


fig-18

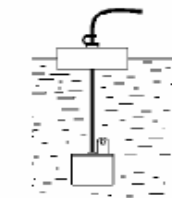


fig-19



correct fig-20

Incorrect

. 12 .

Note: Incorrect using. Do not allow the cable to sink into the bottom, it may be entangled debris (fig-20). The float can be removed from the cable. If you find that you do not need it, remove the rubber stopper from the cable by sliding and gently pulling the float out off the cable toward the plug.

### 7. Fishing at the boat or on ice

#### 7.1 Fishing at the boat

7.1.1 Toss the sensor and float into the water as the previous instructions.

7.1.2 Attach the adapter to the boat hull using the mounting tabs.

7.1.3 "shoot- Thru" the hull of a boat. Place the sonar sensor with petroleum jelly, and press it against the hull bottom with a twisting motion (fig-21.)

**Note:** If depth readings appear as "----" while

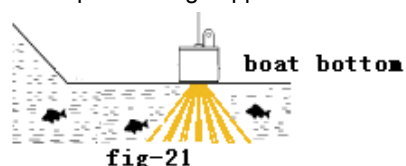


fig-21

. 13 .

using one of these methods. Place the sonar sensor directly in the water to verify that the fish finder is operating properly. If it operates properly while directly in the water, reposition the sonar sensor in a new location in the hull and repeat method 7.1.3. If it still does not work on all hull and you may have to place the sensor directly into the water for proper operation.

#### 7.2 Fishing on ice

To achieve fishing on ice availability, it is highly suggested that you cut a hole through the ice and place the sonar sensor into the water directly (fig-22). If you would like to check the area for depth or fish before cutting a hole, clear away the snow from the ice surface, making sure the surface is smooth. Place a small amount of liquid

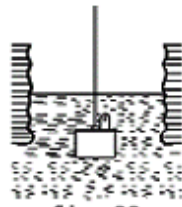


fig-22

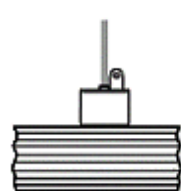


fig-23

. 14 .

water on the ice, then set the sonar sensor on the water allowing the water to freeze around the unit (fig-23). If there are any air bladders between the sonar sensor and ice, or the water below the ice, the unit will not work properly and will require trying another spot or cutting a hole in the ice to use.

**Note:** To remove the sonar sensor from the frozen ice, tap the sonar sensor gently at the base by your hand. If it will not come loose, sprinkle a small amount of water on the ice surface around the base and repeat such actions until the sonar sensor is easily moved.

Never use a blunt object to strike the sonar sensor as this may cause damage to the sensitive internal electronics.

Cold weather is extremely hard on the electrical components within the display housing. It is suggested that you keep the unit in temperatures above 0 degrees Fahrenheit (-18 degrees Celsius) during operation. Remove the batteries from the fish finder to prevent battery leakage and corrosion. Clean the sonar sensor and cable with fresh water and dry it off before storing. Do not submerge or spray the fish finder screen housing with water or use chemicals to clean.

. 15 .

### 8. Product specification

Display:	FSTN - LCD
Backlighting:	White - LED
Power:	4-AAA alkaline batteries
Measure unit:	feet / meter
Sensor beam angle:	45 degrees
Depth range Max:	73M/240 Feet
Depth range Min:	0.6M/2 Feet
Operational Temperature:	(-20°C - 70°C)

### 9. Attachments:

- 1) Round transducer with 25ft cable
- 2) Transducer adapter
- 3) Stainless Bolt
- 4) Stainless wing nut
- 5) Neck strap.
- 6) product specification

. 16 .